

Appendix

Photographs of EUT

of

Product Name

Bluetooth 5Module

Main Model

FCC: BT832X, IC: BT832XH

Series Model

FCC: BT832XE, IC: BT832XHE

Brand

Fanstel

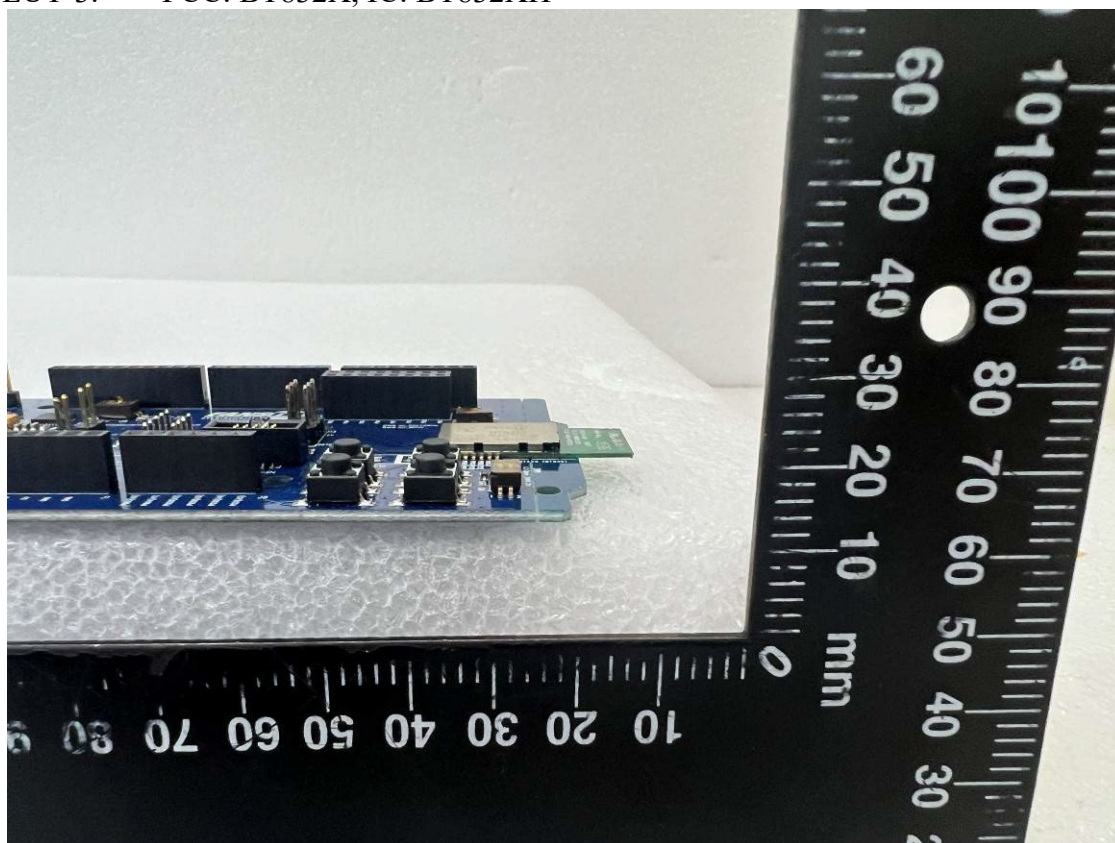
The image shows a custom PCB for a Fanstel EV-8184(C2)-V4, which is based on an Arduino Uno microcontroller. The board is blue and populated with various electronic components. Key features include:

- Microcontroller:** An Arduino Uno ATmega328P is mounted on the left side.
- Power Regulation:** A 5V USB Type-C port is located on the right side. A 3.3V regulator (U1) and a 5V regulator (U2) are present.
- Current Measurement:** Two current measurement modules (SW7 and SW8) are connected to the board.
- LEDs:** Two LEDs (U3 and U4) are connected to the board.
- Resistors and Capacitors:** Numerous resistors (R1-R10) and capacitors (C1-C4) are used for signal conditioning and power filtering.
- Connectors:** A 25-pin D-sub connector (J1) is located at the top, and a 10-pin header (J2) is at the bottom.
- Labels:** The board is labeled with component values and part numbers, such as "EV-8184(C2)-V4" and "FANSTEL".

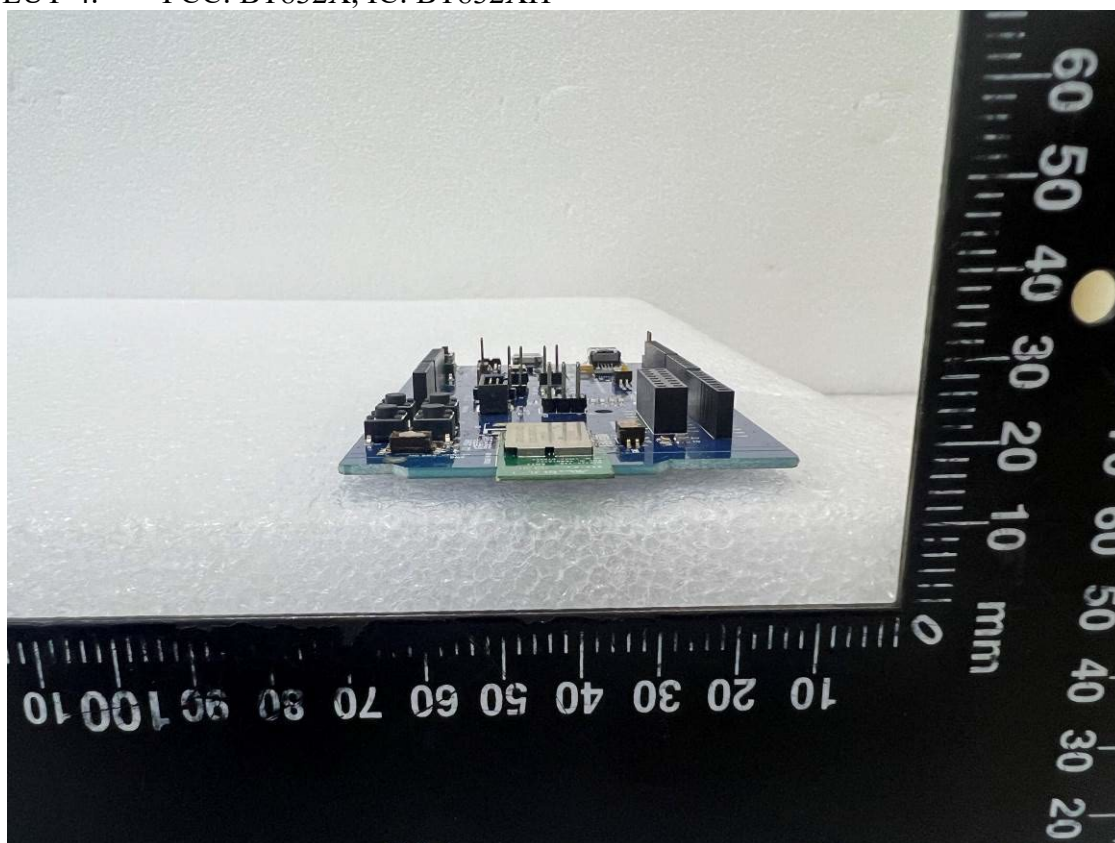
The board is placed on a surface with a metric ruler for scale, showing dimensions in millimeters.

A photograph of a blue printed circuit board (PCB) with a green connector on the left. The board is populated with various electronic components, including integrated circuits, resistors, and capacitors. A ruler is placed above the board for scale, showing measurements in millimeters.

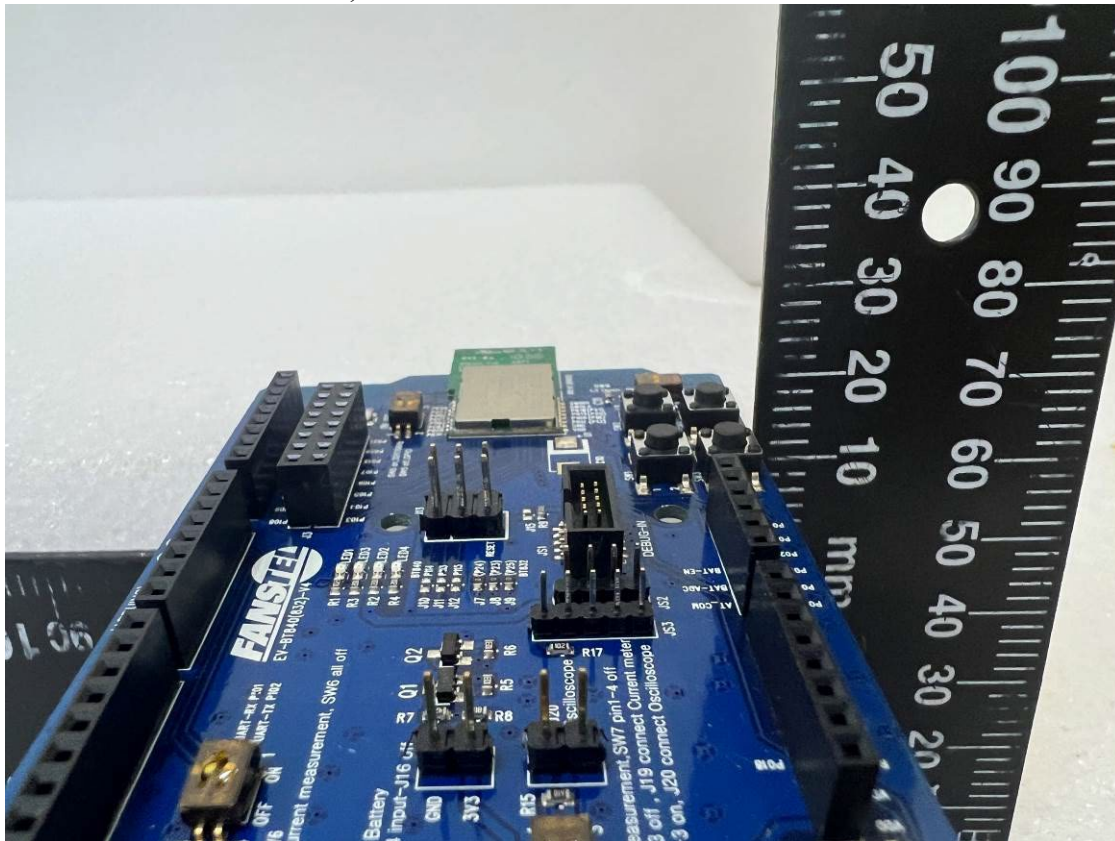
EUT-3. FCC: BT832X, IC: BT832XH



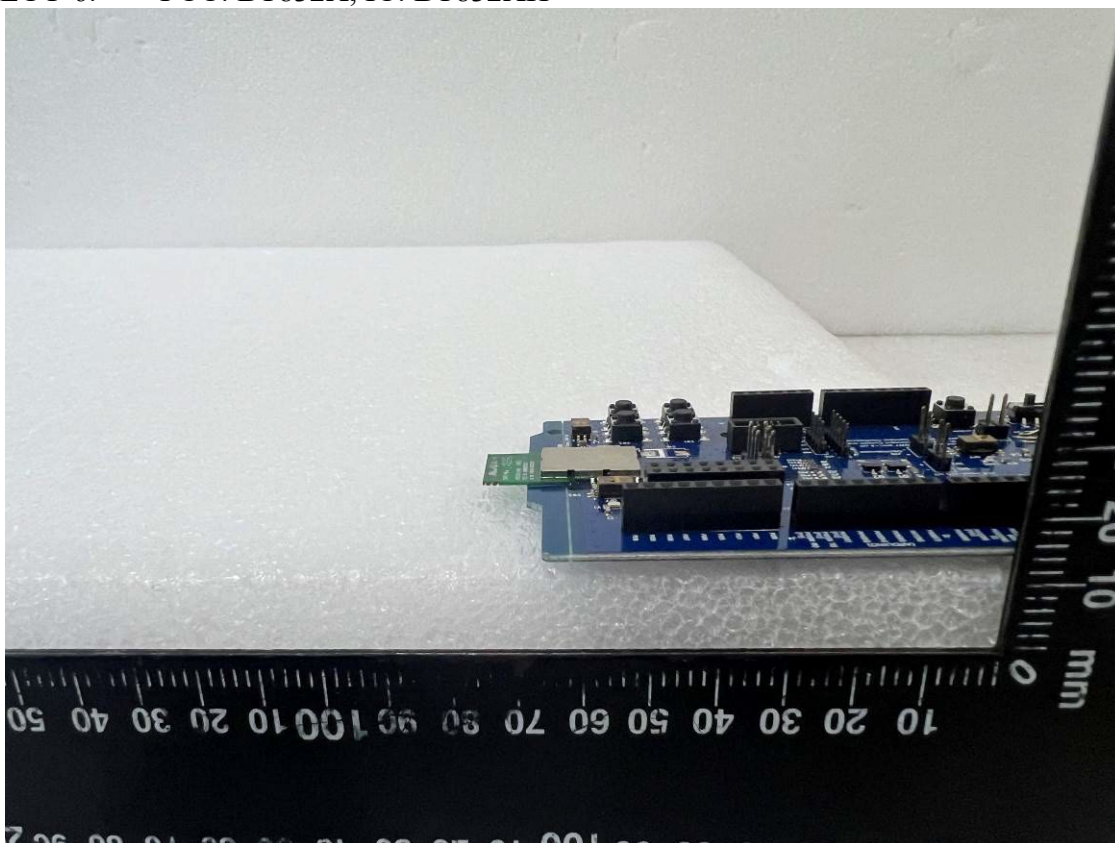
EUT-4. FCC: BT832X, IC: BT832XH



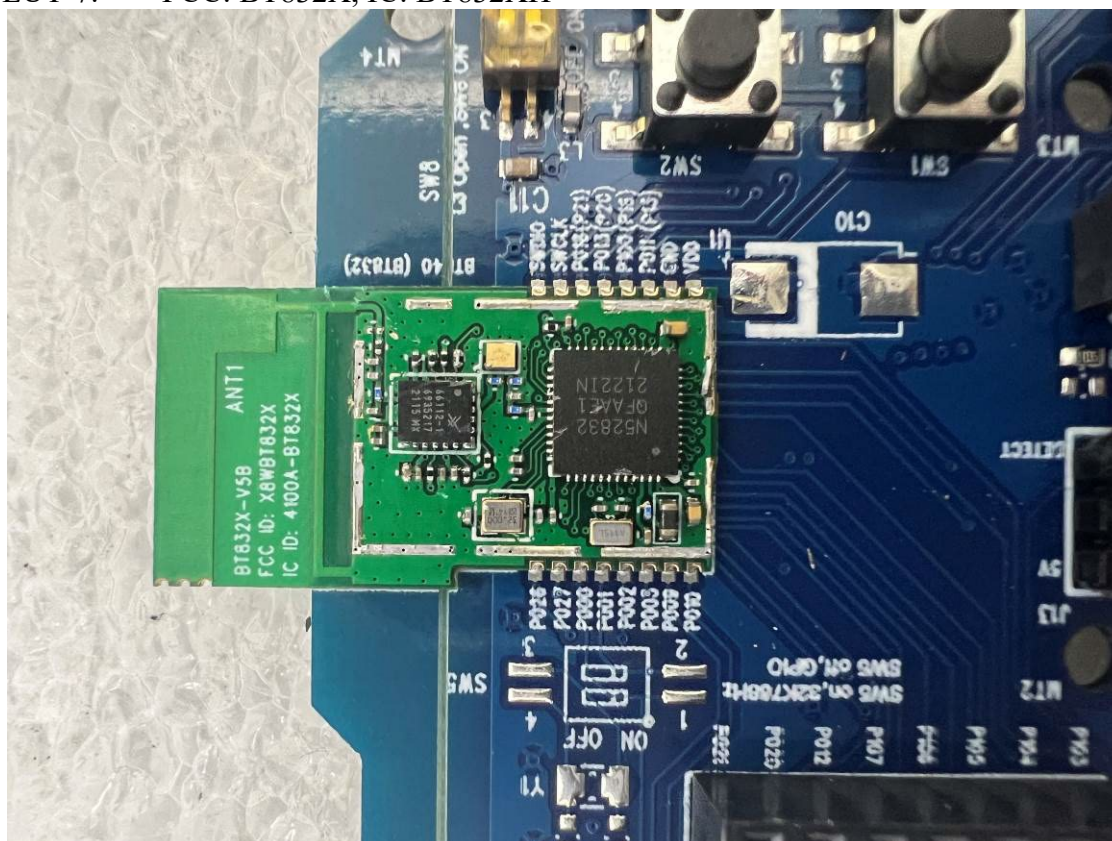
EUT-5. FCC: BT832X, IC: BT832XH



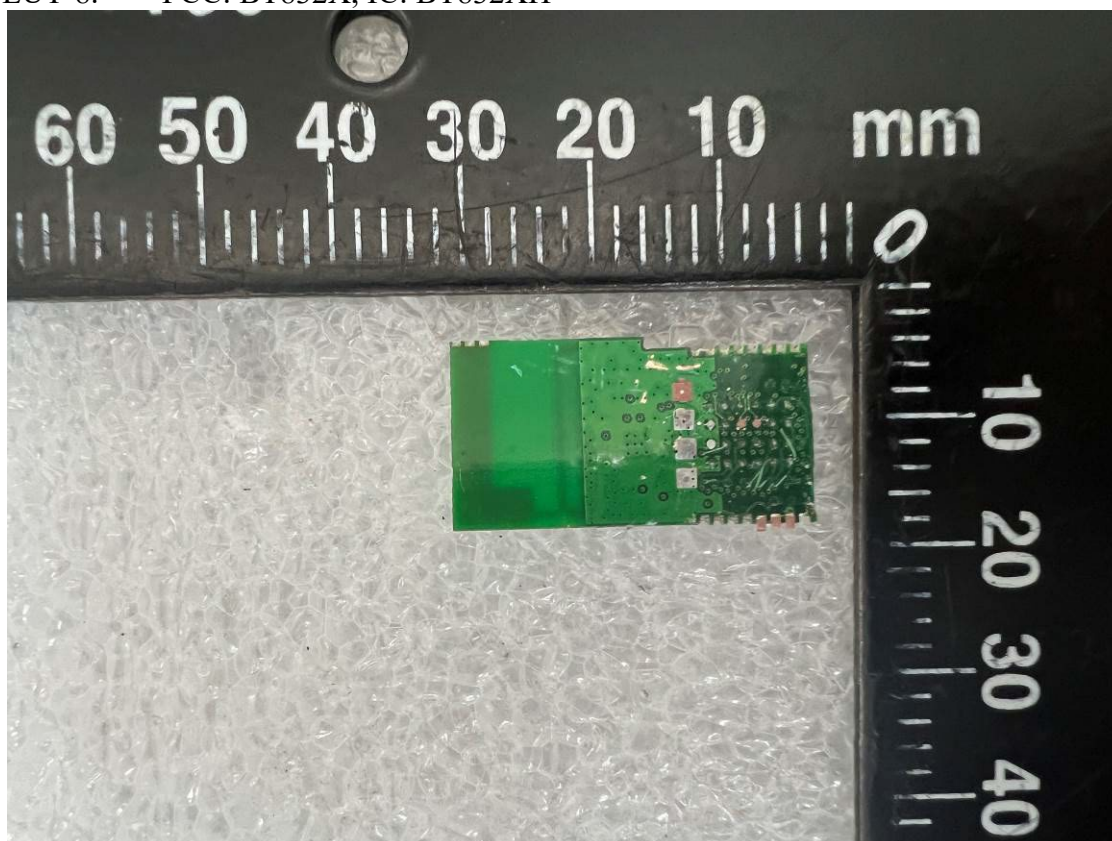
EUT-6. FCC: BT832X, IC: BT832XH



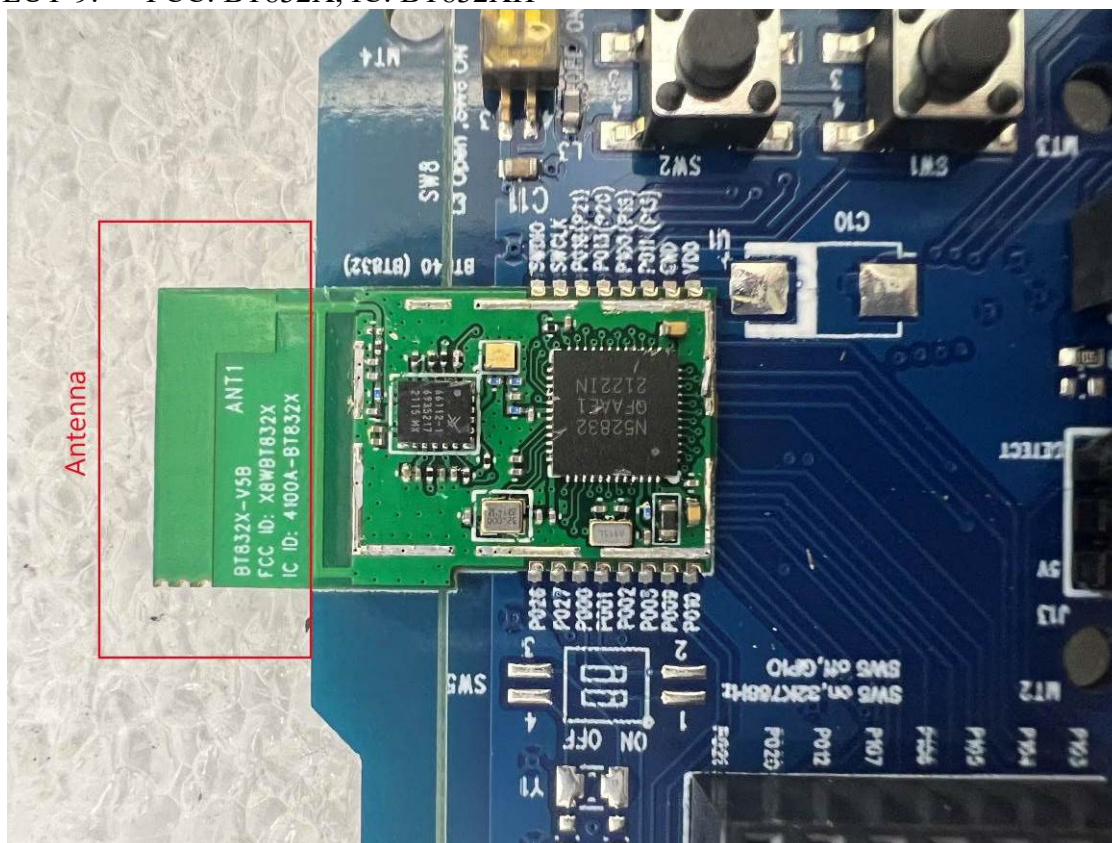
EUT-7. FCC: BT832X, IC: BT832XH



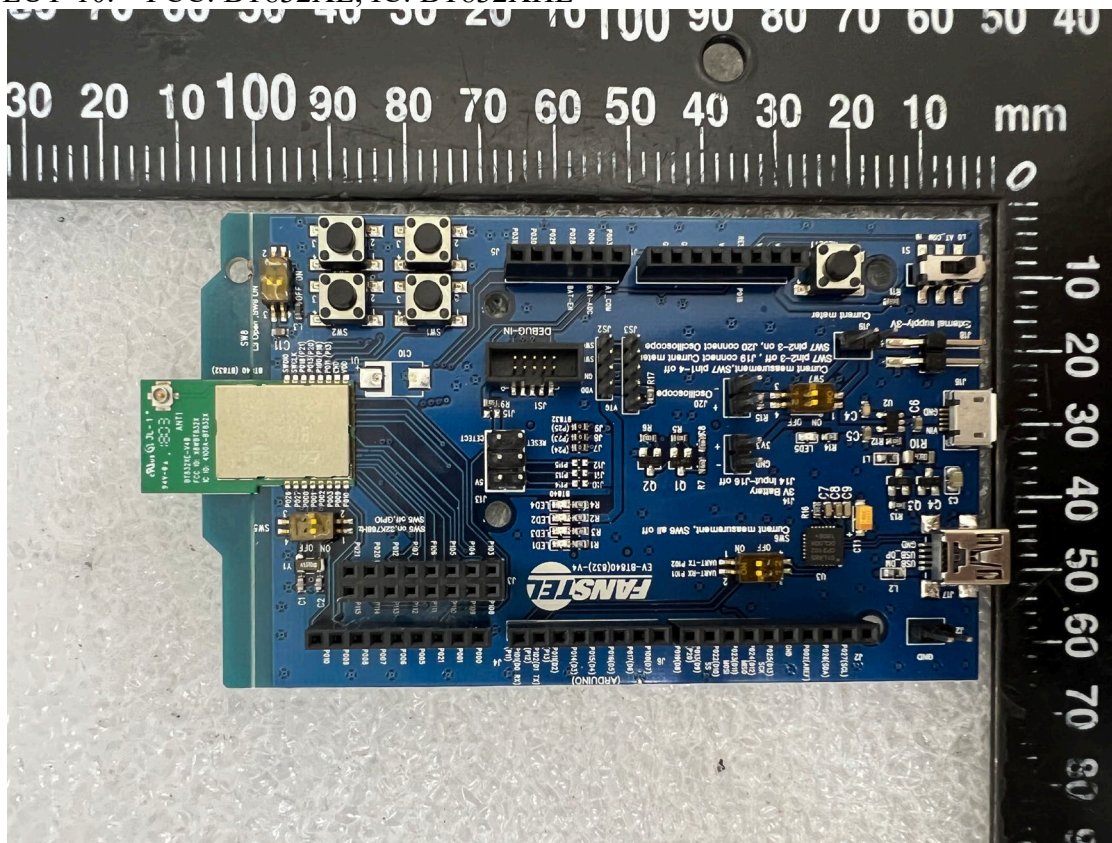
EUT-8. FCC: BT832X, IC: BT832XH



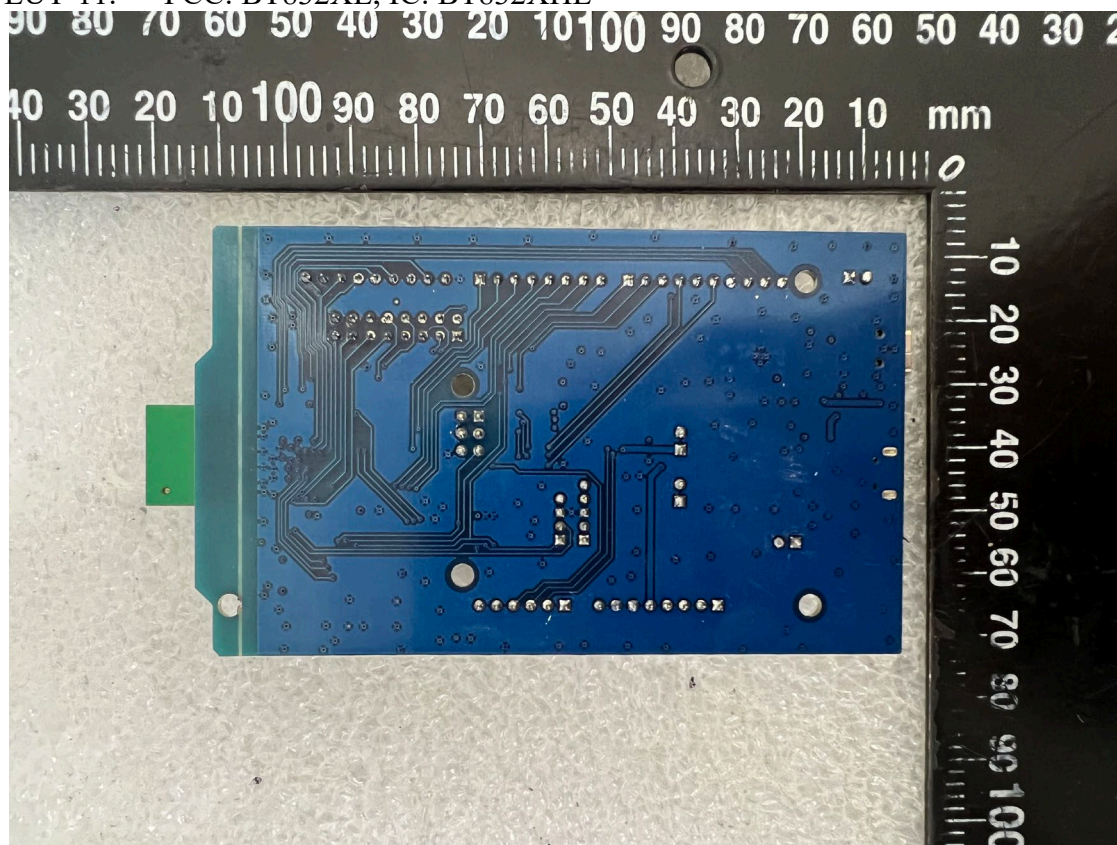
EUT-9. FCC: BT832X, IC: BT832XH



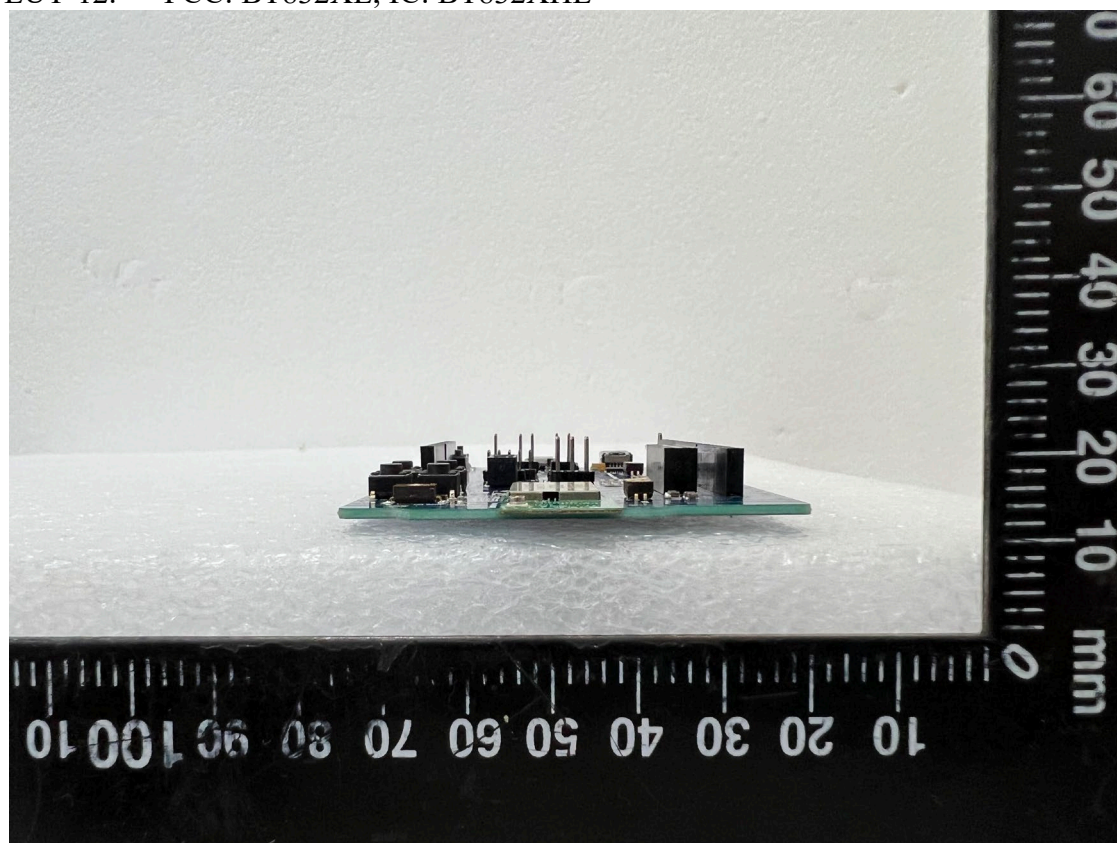
EUT-10. FCC: BT832XE, IC: BT832XHE



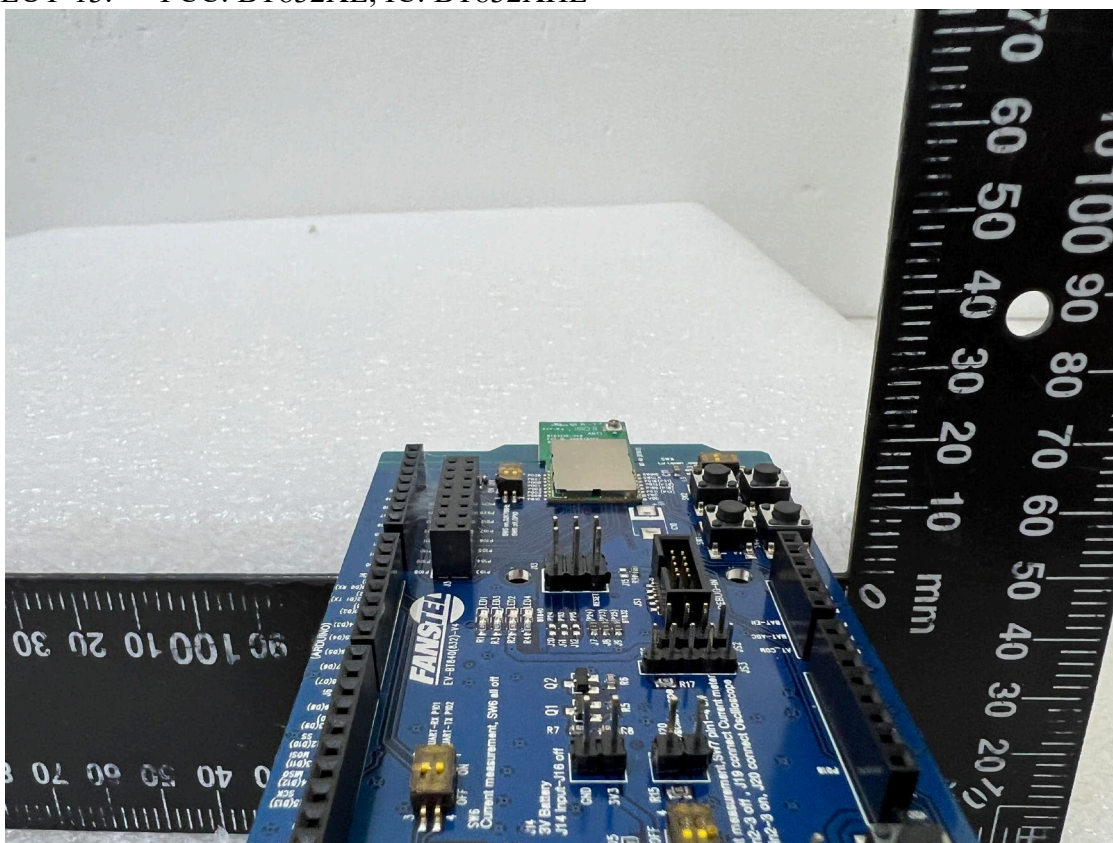
EUT-11. FCC: BT832XE, IC: BT832XHE



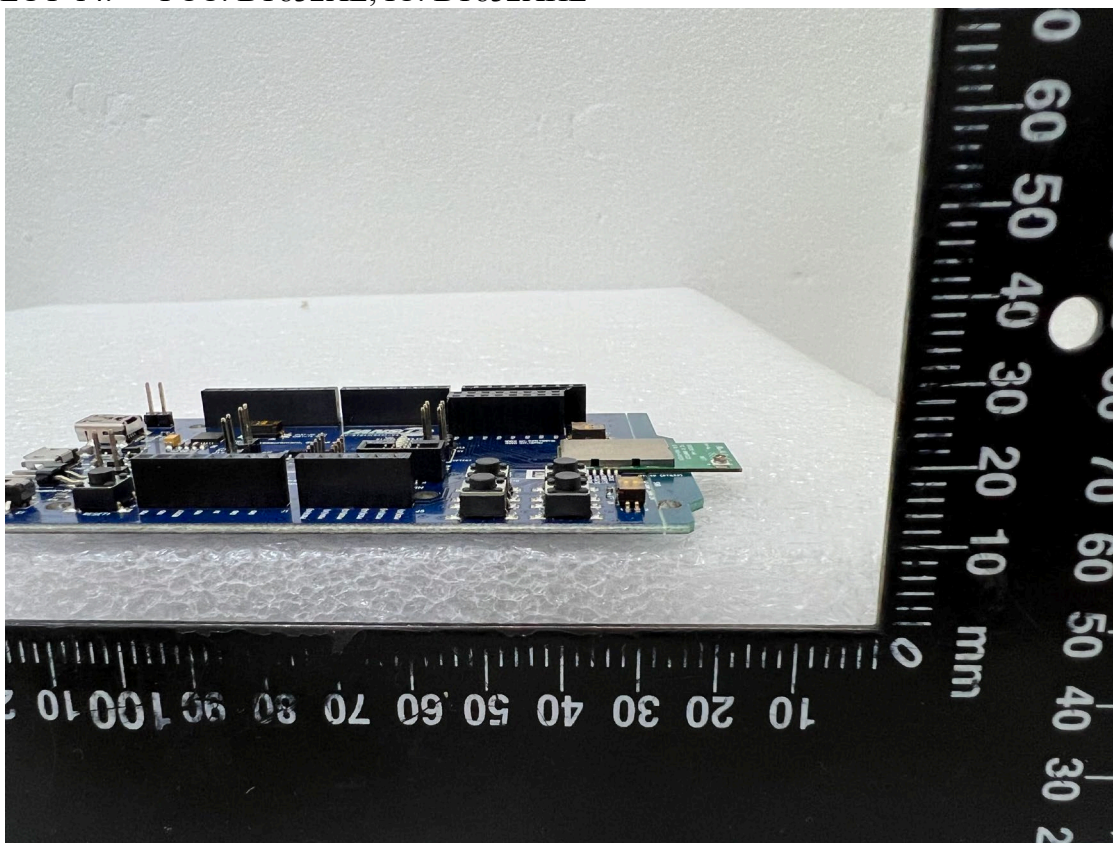
EUT-12. FCC: BT832XE, IC: BT832XHE



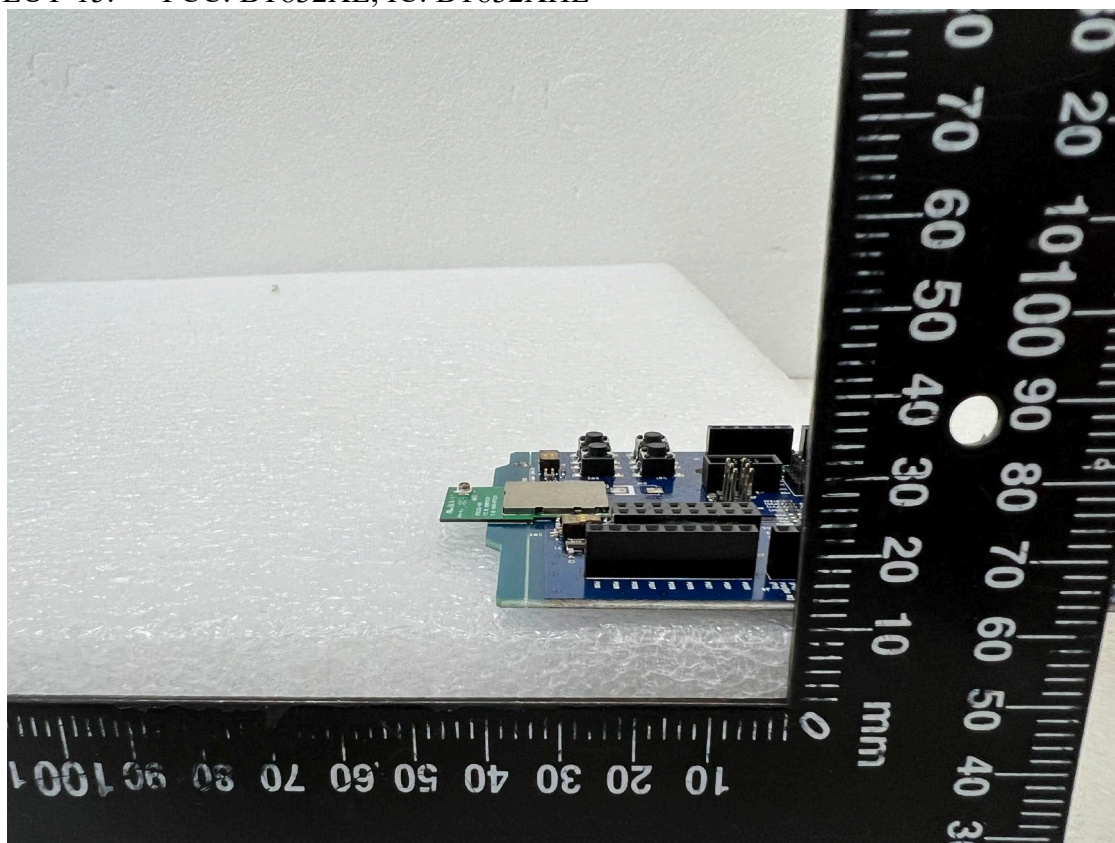
EUT-13. FCC: BT832XE, IC: BT832XHE



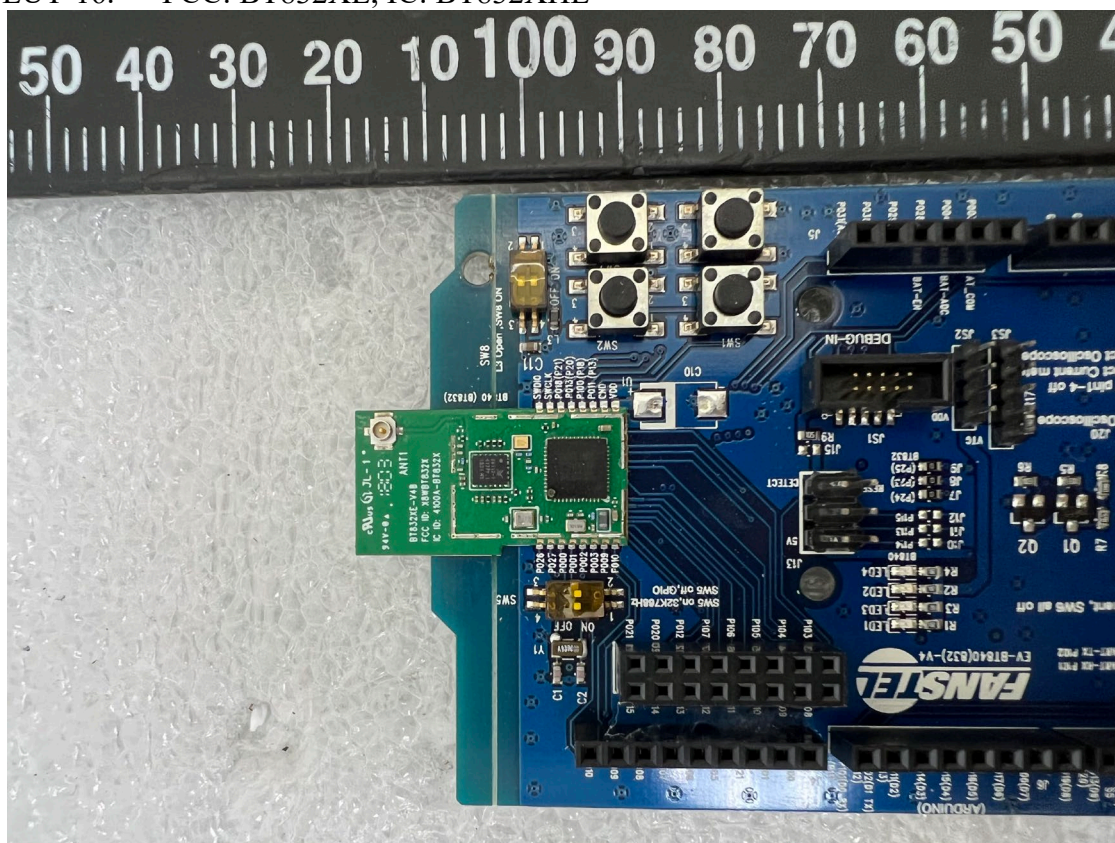
EUT-14. FCC: BT832XE, IC: BT832XHE



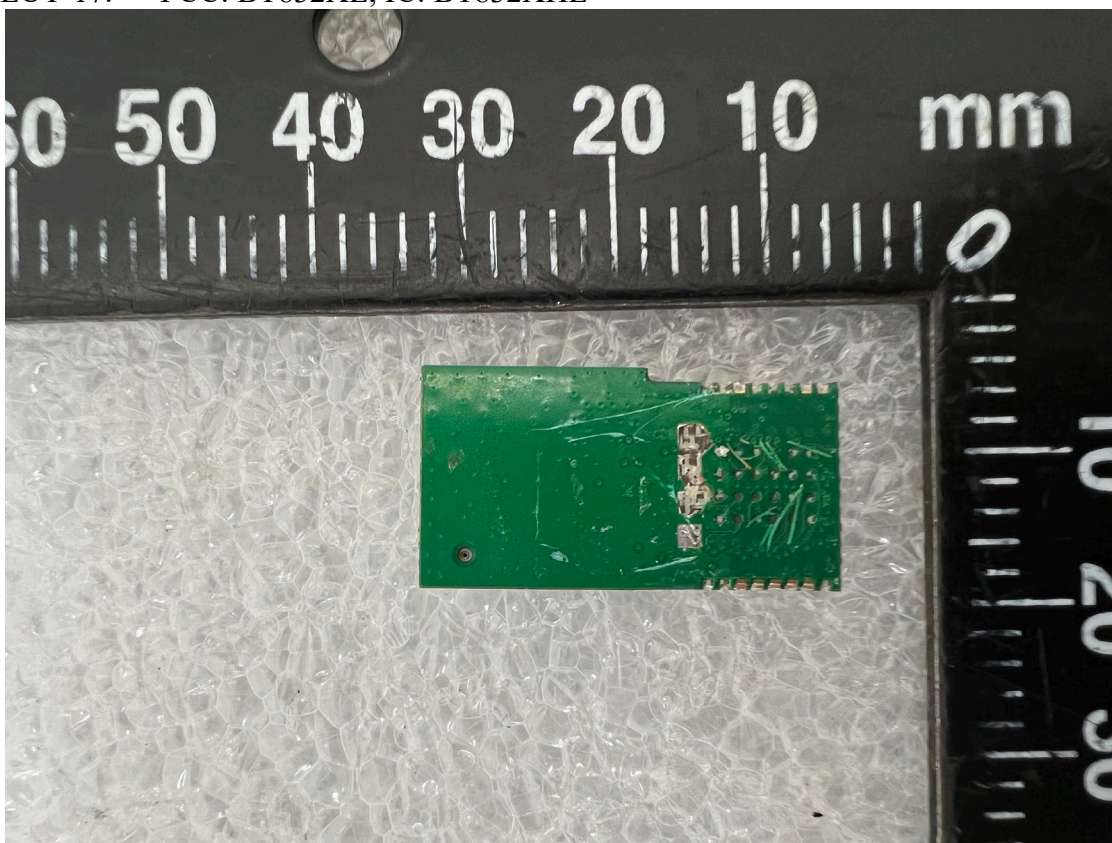
EUT-15. FCC: BT832XE, IC: BT832XHE



EUT-16. FCC: BT832XE, IC: BT832XHE



EUT-17. FCC: BT832XE, IC: BT832XHE



EUT-18. FCC: BT832XE, IC: BT832XHE



EUT-19. FCC: BT832XE, IC: BT832XHE

